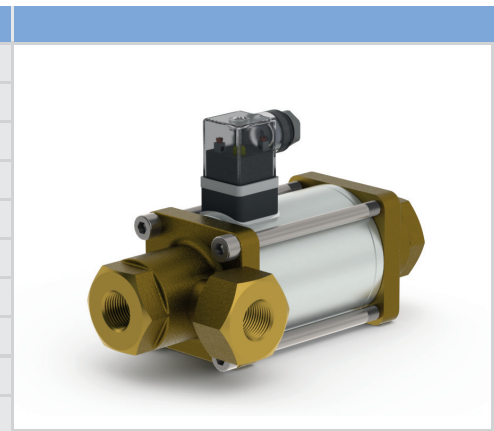


nominal specifications	
3/2-way coaxial valve	direct acting
pressure range	0-600 psi
connection	thread
function	NC - normally closed, flow A → C NO - normally open, flow A → B
design	pressure balanced, with spring return
body materials parts in contact with media	brass
seal materials seat / dynamic / static	FPM / PTFE / FPM customer to verify seal / seat compatibility with media
media	gaseous - liquid - highly viscous - gelatinous - contaminated
electrical connection	PG 9, plug acc. DIN EN 175301-803 form A, LED



technical data	CXD 10 DR	CXD 15 DR	CXD 20 DR	CXD 25 DR
orifice	DN 10	DN 15	DN 20	DN 25
threads	FNPT 3/8	FNPT 1/2	FNPT 3/4	FNPT 1
$CV_{A \rightarrow B / A \rightarrow C}$	2.5 / 1.8	6.0 / 4.1	8.6 / 6.4	14.0 / 11.7
media temperature	-4 °F to +212 °F	-4 °F to +212 °F	-4 °F to +212 °F	-4 °F to +212 °F
ambient temperature	-4 °F to +140 °F	-4 °F to +140 °F	-4 °F to +140 °F	-4 °F to +140 °F
switching time opening / closing	45 ms / 70 ms	60 ms / 130 ms	105 ms / 150 ms	150 ms / 190 ms
vacuum leak rate	$< 10^{-4} \text{ mbar} \cdot \text{l} \cdot \text{s}^{-1}$	$< 10^{-4} \text{ mbar} \cdot \text{l} \cdot \text{s}^{-1}$	$< 10^{-4} \text{ mbar} \cdot \text{l} \cdot \text{s}^{-1}$	$< 10^{-4} \text{ mbar} \cdot \text{l} \cdot \text{s}^{-1}$
flow direction	A → B / A → C B → A (Δp 180 psi max.)	A → B / A → C B → A (Δp 180 psi max.)	A → B / A → C B → A (Δp 180 psi max.)	A → B / A → C B → A (Δp 180 psi max.)
nominal voltage	DC 24 V AC 110 V	DC 24 V AC 110 V	DC 24 V AC 110 V	DC 24 V AC 110 V
current consumption	DC 1.45 A AC 0.36 A	DC 2.1 A AC 0.41 A	DC 2.2 A AC 0.56 A	DC 2.5 A AC 0.62 A
insulating rating	H	H	H	H
protection	IP 65	IP 65	IP 65	IP 65
energized duty rating	ED 100%	ED 100%	ED 100%	ED 100%
length L1 / L2	6.54 in / 1.97 in	7.87 in / 2.76 in	9.02 in / 3.15 in	9.80 in / 3.54 in
length L3 / L4	1.46 in / 1.26 in	2.36 in / 1.52 in	2.83 in / 1.79 in	3.15 in / 1.89 in
weight	4.41 lb	9.04 lb	13.23 lb	17.86 lb

accessories optional	order-codes			
mounting brackets stainless steel	1 2 3 5 5 5	1 2 3 5 5 6	1 2 3 5 5 7	1 2 3 5 5 8

drawings	circuit symbols	valve order-code
	<p>function: NC closed when not energized</p> <p>function: NO open when not energized</p>	<p>NC = 3 NO = 4</p> <p>DN 10 = 5 DN 15 = 6 DN 20 = 7 DN 25 = 8</p> <p>AC 110 V = 1 DC 24 V = 4</p>